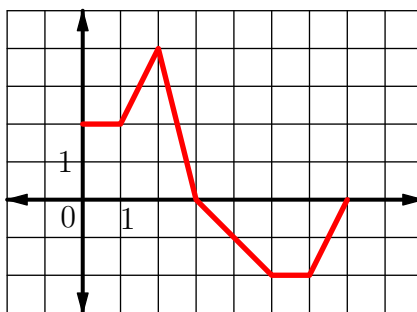


Quiz 11

Math 1A, section 103

April 17, 2014

1. Let $g(x) = \int_1^x f(t)dt$, where f is the function whose graph is shown.



- Evaluate $g(0)$, $g(1)$, $g(2)$, $g(3)$, and $g(6)$.
- On what interval is g increasing?
- Where does g have a maximum value?
- Sketch a rough graph of g .