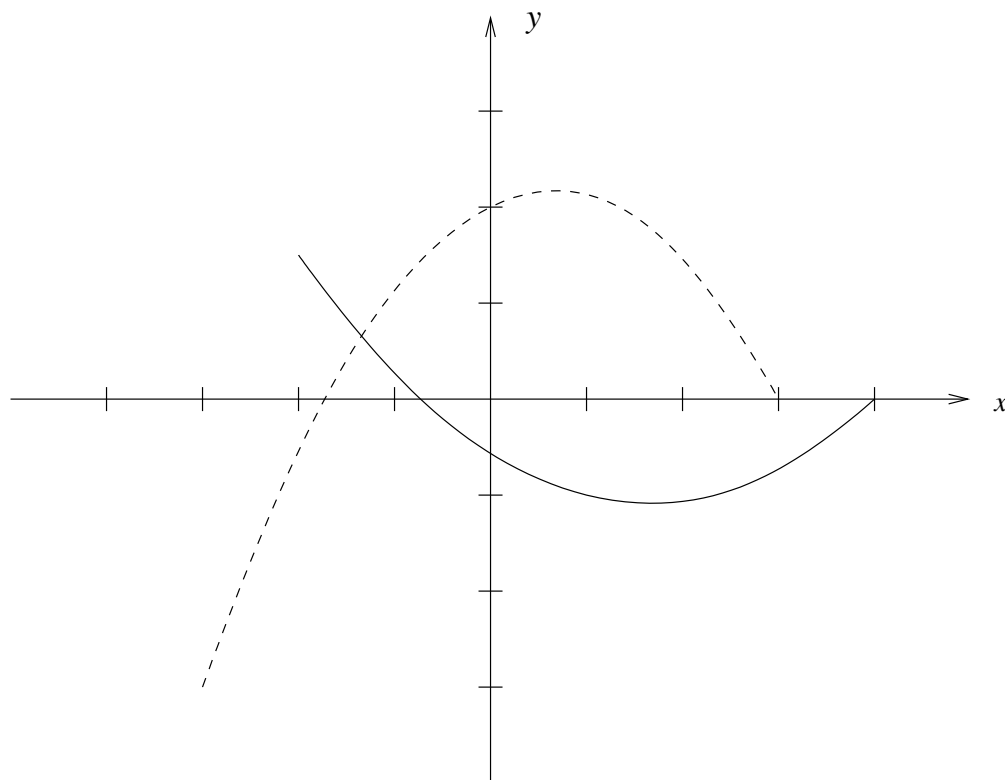


**Quiz 1 Solution (version B)**

Name \_\_\_\_\_

Student ID Number \_\_\_\_\_

1. The graph  $y = f(x)$  of a function  $f$  is shown. On the same grid, sketch the graph of  $y = -2f(x + 1)$ .



2. Find the inverse function  $f^{-1}(x)$  of the function  $f(x) = 1/\sqrt{x+1}$ , and specify the domain of  $f^{-1}(x)$ .

$$f^{-1}(x) = \frac{1}{x^2} - 1, \text{ with domain } (0, \infty).$$

3. Evaluate  $9^{\log_3(10)}$ .

$$9^{\log_3(10)} = 3^{2\log_3(10)} = 100.$$