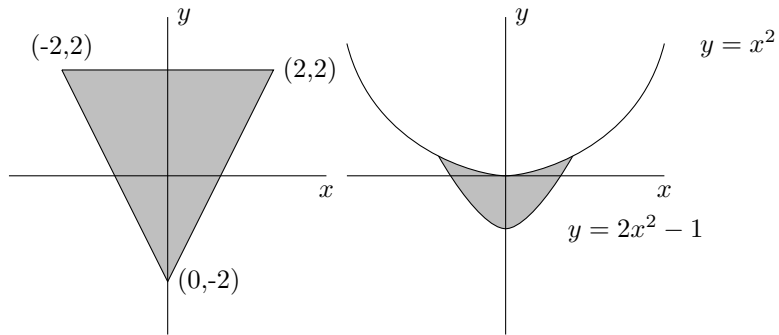
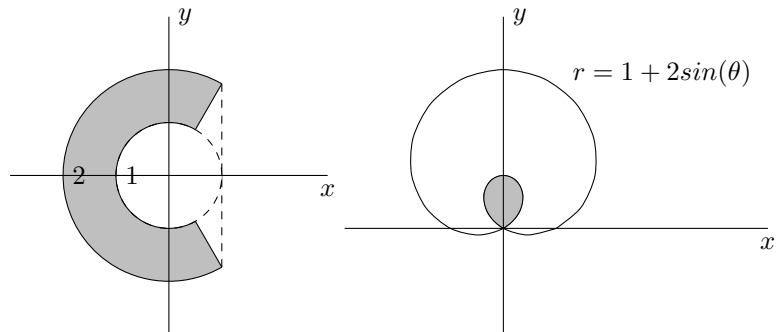


0.1. **Setting up Double Integrals.** Set up an integral that will compute the volume of the graph of a function $f(x, y)$ over each of the following regions:



0.2. **Setting Up Polar Integrals.** Set up an integral that will compute the volume of a function $g(r : \theta)$ over each of the following regions:



0.3. **Computing Double Integrals.** Using double integrals, find the volume of this figure:

