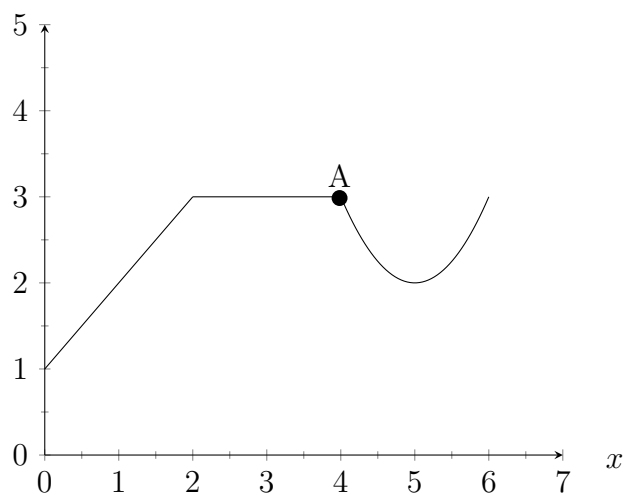


1. Suppose  $f$  is a function whose graph is the figure below:



- (a) What are the coordinates of the point A?
- (b) What is the domain of  $f$ ?
- (c) What is the range of  $f$ ?
- (d) Sketch the graph of  $g(x) = f(x - 1) + 2$ .

2. Let  $f(x) = 4x + 5$ . Find a formula for  $f^{-1}$ .

BONUS: Find a formula for the function  $f$  in Problem 1.