

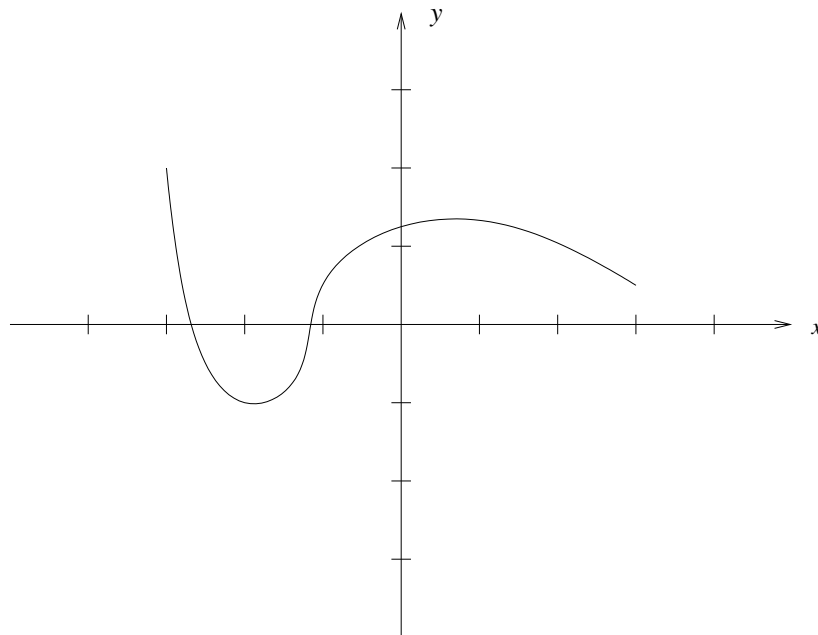
MATH 1A

Quiz 1, September 2, 2008

Name: _____

Each question is worth 3 points. Please write neatly and show all work.

1. The graph $y = f(x)$ of a function f is shown. On the same grid, sketch the graph of $y = f(2x) - 1$.



2. Find the inverse function $f^{-1}(x)$ of the function $f(x) = \sqrt{3x-2}$ and specify the domain of $f^{-1}(x)$.

3. Evaluate $9^{\log_3(10)}$.